

LIVING PLANS

New Concepts for Advanced Housing

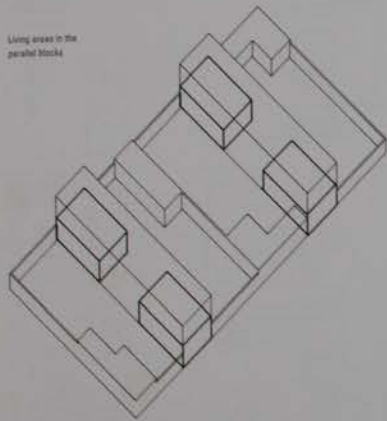
Klaus-Peter Gast



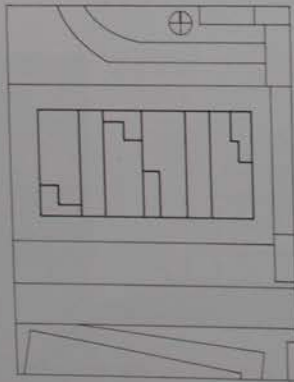
Birkhäuser



View of the group of buildings



Living areas in the parallel blocks



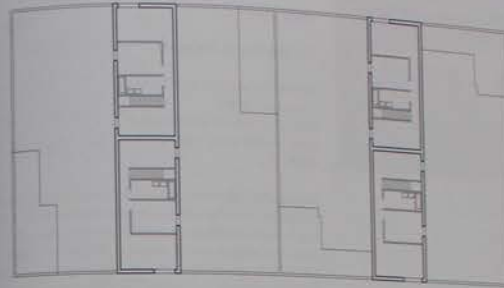
Building blocks in square walls between the streets

Bob 361 Desmet-Vanhamme-Culas

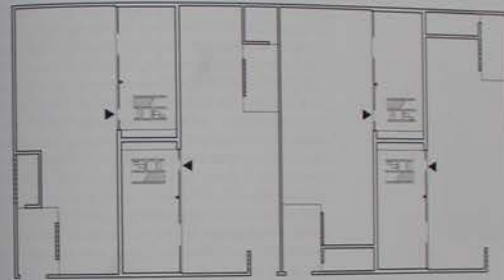
Patio Houses in Lebbeke

Houses in a rural new building area
Lebbeke, Belgium
Masonry construction with brick facing
Total usable space per unit: 120 sq.m.
1998

Two squares form a walled frame for four apartment blocks that communicate with each other in an unusual way. Two units are linked in pairs in the centre of each of the two sites, creating a formal and minimal building ensemble. The parallel blocks split the plots up in such a way that a half belongs to each block. The very simplicity of the concept is convincing: each building acquires a completely protected garden court that the neighbours cannot look into, as the concentrated large apertures on the ground floor face in opposite directions. The upper storey windows also face the dwelling's own plot only. The framing and enclosing wall creates a patio effect. It is not possible to look in from the outside either. Hence the garden court enables the ground floor living area to be glazed to its full height, and thus extend to the end of the plot. The space is allocated in the simplest possible, and also the most reasonably priced, way: only the stairs and a small ancillary zone separate the living area from the kitchen. Three bedrooms and a bathroom are placed on the top floor. As principal access, garden, terrace and also roofed parking area, the patio mediates between outside and inside, and turns out to be a pleasingly dimensioned outside space. The pragmatic building sections seem to form an integrated whole, flowing together with the walls and creating a homogeneous overall figure through the dark brick of the outer skin. Building and garden, and thus interior and exterior, present themselves as elements in a successful overall relationship.



Top floor with two rooms and bathrooms



Ground floor of the patio houses with access to the car park and living area with adjacent kitchen

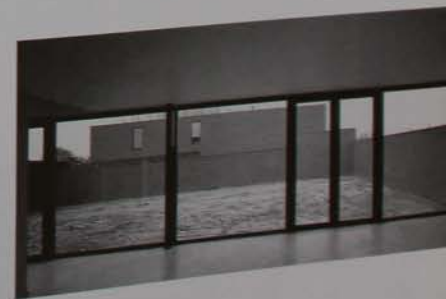


Cross section

View from the long side



Living room and garden courtyard shortly after completion



HIGH-DENSITY LIVING Village



architect
studied
technical
awarded
s on the
research
es,
ankara;
fin,
and
Charles

C. Basel
ecom-
petitive

ny and

itecture