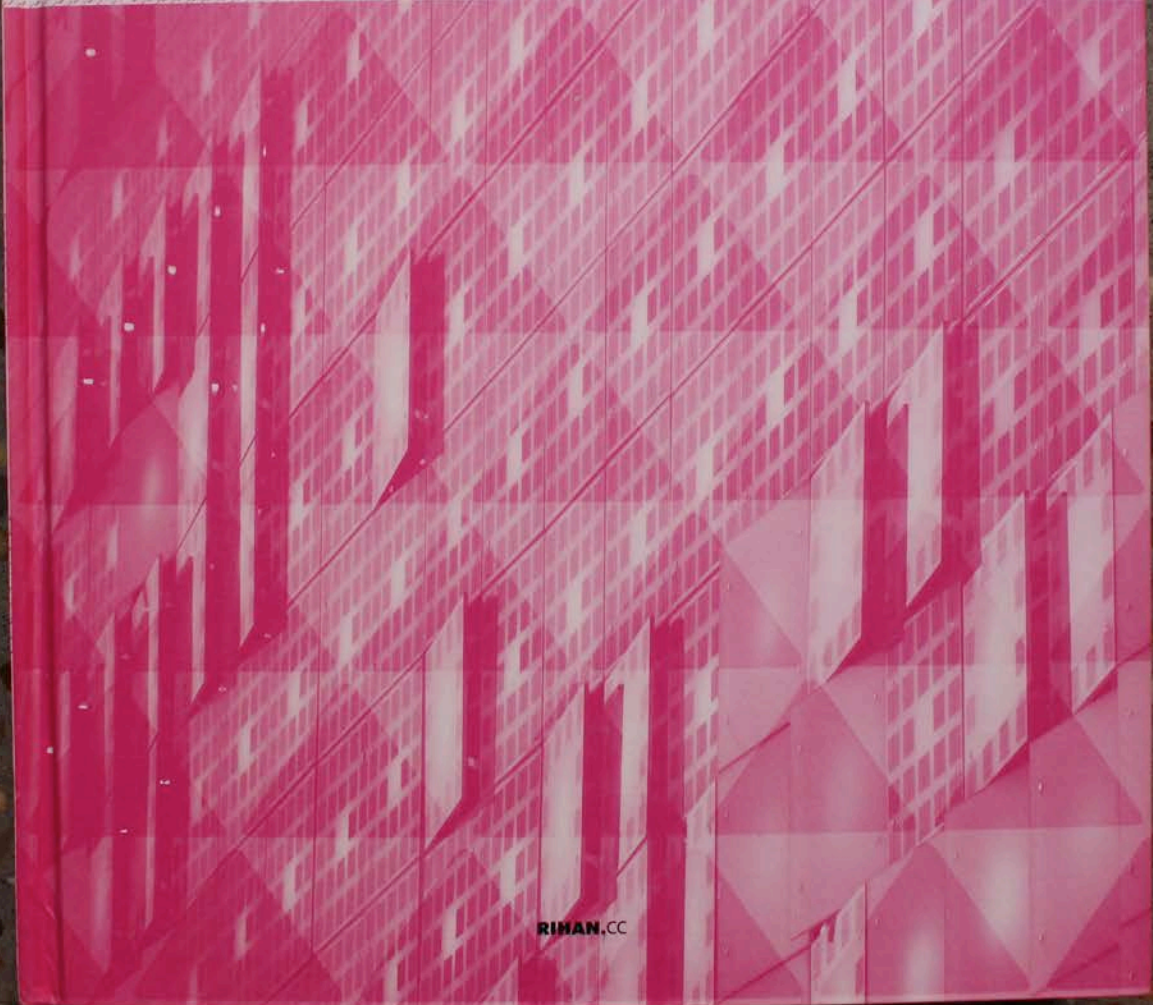


A-Z III VOL.1

ARCHITECTURE ZONE
RIHAN.CC H.K. RIHAN INT'L CULTURE SPREAD LIMITED



RIHAN.CC

→ Addition to an Addition

BOB361 Architects

Location: 2001 Heverlee, Vlaams Brabant, Belgium
 Photographer: Niekens Architects
 Original doublehouse: 129 m² / 1383 m²
 Bob361 addition: 22 m² / 237 m²
 Alter the addition: 27 m² / 291 m²

The original doublehouses in this broad living street were through time completed with all kind of annexes in a typical Flemish manner. Therefore the semi-detached house was completely filled up. Despite the larger useful floor area, the inhabitants no longer experienced the surrounding open space. Through the removal of these annexes, light, air and views are again offered to the house.

The existing living volume gets expanded on the frontside as well as on the backside within the strict regulations. By adding large panels of glass blocks and windowplanes the facades become doubled and intermediary useful spaces are created. The newly created volumetry plays a game of seeing and not-seeing, inside and outside. As the front facade the glass blocks act as a screen to the street and define an enclosed terrace connected to the interiorised kitchen.

Through the introduction of a new compact and open stair, some functional spaces get located within the old stair area and the house can be experienced as one continuous interior space. At the different floors the stair connects the sleeping rooms in a more fluent manner and solves the height differences between the old house and the extension from the seventies.

The completely glassed back-facade enables light to penetrate deep into the (formerly dark) living and eating area, thus renewing the relation with the garden. A double height space above the living room illuminates the stair and the night hall on the first level.

The new additions are technically conceived as large prefabricated elements, both the closed walls (white concrete) as the translucent parts (panels with glass blocks and windows).

With this second addition we try to restore the appearance of the two existing parts as one logical unity, through the use of materials and the insertion of a new internal circulation.

"The tourist guides will be coming here soon to look at the glass house", says a friendly elderly man in Heverlee. He and his wife are looking at the private home of the D.B. family, whose facade on the street side is dominated by white glass stones. The neighbours have been living for many years in a similar house, in English garden style, which has more or less been kept in its original condition. "The D.B. family's house also looked like that."

A volume had been added on, long before BOB361 began to consider a renovation. "In the initial condition there was too little contact between the house and both the garden and street", says Goedele Desmet. "It was important for the owners to restore contact with the garden", Ivo Vanhonne adds. "They also needed extra interior space. We suggested integrating the former functional extension in the new spatial extension. There was a very difficult set of stairs in the house which was now replaced by new stairs that got more space."

"The translucent glass blocks, which in fact are in front of the facade, simultaneously ensure a connection with the street and a separation from it", says Goedele Desmet. "A bay window originally acted as a discrete bridge to the street. Because the owners did not want to expose themselves fully to the people looking in, for example with a large glass section, we opted for glass blocks. We used these throughout the project to obtain a uniform material quality and light penetration."

From: "Roadbook bob361 architects: tracks & traces: a confrontation of architectural projects in/and their environment", 2005, Generale Membrane, Ceggia (I)



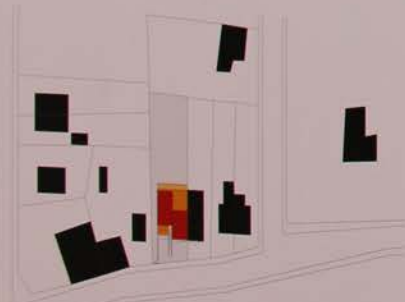
level +2



level +1



level 0

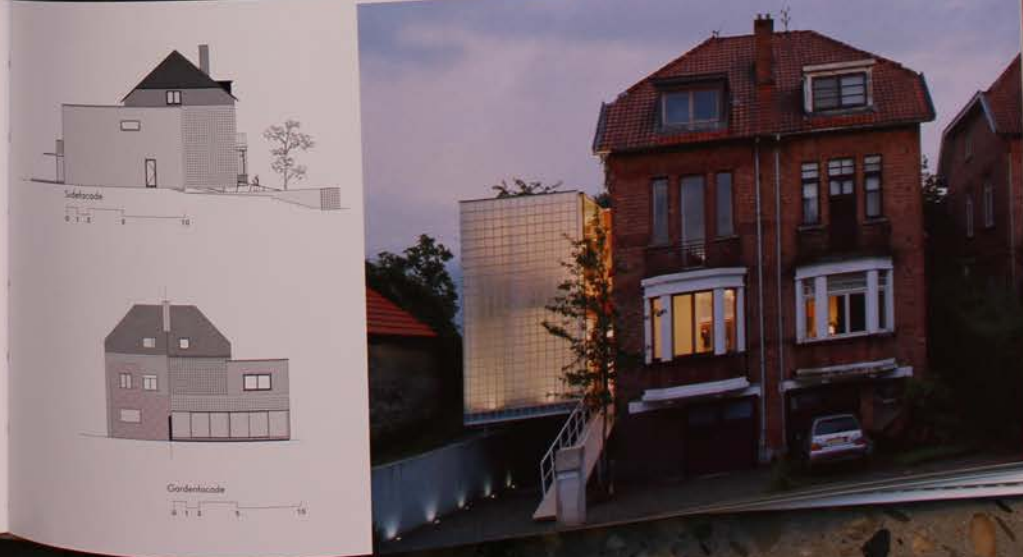


massplan

- 01 entrance
- 02 kitchen
- 03 eating area
- 04 living room
- 05 bureau
- 06 sleeping room
- 07 tv-room
- 08 bathroom
- 09 douche
- 10 terrace
- 11 double height space

- 01 entrance
- 02 kitchen
- 03 eating area
- 04 living room
- 05 bureau
- 06 sleeping room
- 07 tv-room
- 08 bathroom
- 09 douche
- 10 terrace
- 11 double height space

- 01 entrance
- 02 kitchen
- 03 eating area
- 04 living room
- 05 bureau
- 06 sleeping room
- 07 tv-room
- 08 bathroom
- 09 douche
- 10 terrace
- 11 double height space



Sidefacade



Gardenfacade



